

凱譽科技股份有限公司

KAI YUI TECHNOLOGIC CORP.

SPECIFICATIONS 規格書

A) SCOPE 適用範圍 (使用系列產品料號：)

This specification covers " POWER JACK "

B) CHARACTERISTICS 性能

Standard atmospheric specified, measurements shall be made at temperature , humidity and air pressure within the following limit :

Ambient temperature	:	5 °C	to	35 °C
Relative humidity	:	45 %	to	85 %
Air pressure	:	85 Kpa	to	106 Kpa

標準狀態：沒有特別指定時,測試是在常溫、常濕、常壓下進行：

環境溫度	:	5 °C	to	35 °C
相對濕度	:	45 %	to	85 %
大氣壓力	:	85 Kpa	to	106 Kpa
Operating temperature range	:	-20 °C	to	60 °C
操作溫度範圍	:	-20 °C	to	60 °C
Storage temperature range	:	-25 °C	to	70 °C
保存溫度範圍	:	-25 °C	to	70 °C

C) ELECTRICAL CHARACTERISTICS 電氣性能 .

ITEM 項目	TEST CONDITIONS 測試條件	SPECIFICATION 規格
(C1)Rated Voltage 核定電壓	PIN 2、PIN 3、PIN 4、PIN 5	DC 20V
Rated Current 核定電流		7.5A
(C2)Insulation Resistance 絕緣阻抗	A voltage of 500V DC shall be applied to the terminals. After which measurement shall be made. DC 500V 在端子之間用 DC 500V 測試	100M Ω or more ≥ 100M Ω

凱譽科技股份有限公司

KAI YUI TECHNOLOGIC CORP.

ITEM 項目	TEST CONDITIONS 測試條件	SPECIFICATION 規格
(C3)Contact Resistance 接觸阻抗	Measurement shall be made at 1 K Hz with 100 mA or less (With the test plug as show in item F) <1>Initial before any testing a、Plug shield to socket <2>After life test with mating plug a、Plug shield to socket 在 1 K Hz, 100 mA 以下電流做測定(測試用插棒參考第 F 項) <1>初始，在做任何測試前 a、插棒插入後各極與插座間 <2>在以對應插棒做壽命試驗後 a、插棒插入後各極與與插座間	Initial : 30mΩ or Less ≤ 30mΩ After life : 60mΩ or Less ≤ 60mΩ
(C4)Dielectric Strength 耐電壓	Withstand 0.5 mA (Trip current) 500V AC(50 or 60 Hz) between any open terminal for 1 minute. 可承受 0.5 mA (感度電流), AC 500V (50or 60 Hz) . 1 分鐘，在任何 open 端子之間。 (Open terminal: Between each terminal which should not make contact , before plug insert to socket, after plug insert to socket) (Open 端子: 指相互未接觸的端子, 如未插入 plug 時, 插入 plug 後)	Without distinct Damage 無異常

D) . MECHANICAL CHARACTERISTICS 機械性能

ITEM 項目	TEST CONDITIONS 測試條件	SPECIFICATION 規格
(D1)Insertion force and Withdrawal force 插入力 / 拔出力	Initial 初始 (With the test plug as show in item	Insertion force 插入力 0.5kgf ~ 5kgf

凱譽科技股份有限公司

KAI YUI TECHNOLOGIC CORP.

	F) (測試用插棒規格參考第 F 項)	Withdrawal force 拔出力 0.5kgf ~ 5kgf
	After life test 壽命試驗後 (With the test plug as show in item F)	Insertion force 插入力 0.3kgf ~ 5kgf
	F) (測試用插棒規格參考第 F 項)	Withdrawal force 拔出力 0.3kgf ~ 5kgf
(D2)Terminal strength 端子強度	Terminals must withstand a 500g minimum pull for 10 seconds before movement or break from housing occurs , but deformation of terminal is authorized . 各端子部須測試荷重 500g , 10 秒 , 端子不可有脫落或塑膠本體不可有破裂等情況 , 但端子部彎曲 , 變形可接受 .	

E) . ENDURANCE CHARACTERISTICS 耐久性能

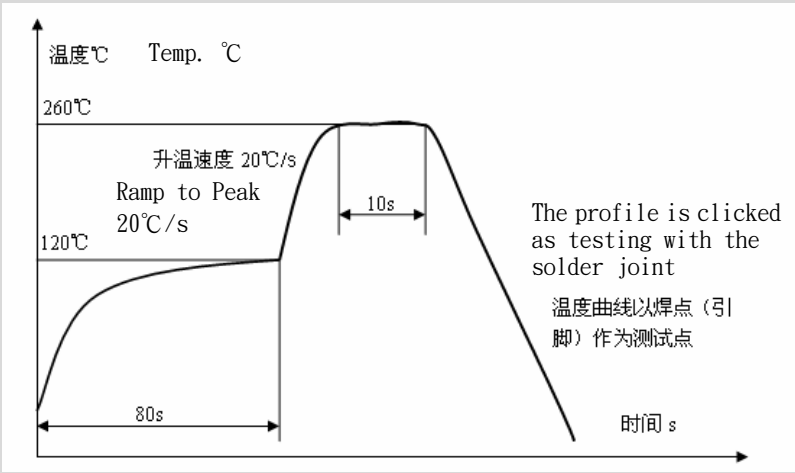
ITEM 項目	TEST CONDITIONS 測試條件
(E1)Life test 壽命試驗	The life test shall consist of 5,000 cycles of insertion and withdrawal with test plug(Show in item F), at a rate of 20 to 30 cycles per minute under no load . 壽命試驗在無負荷狀態下 20 ~ 30 回 / 1 分鐘的插入及拔出,做 5,000 回,測試用插棒(參考第 F 項) .
(E2)Soldering test 焊錫試驗	The terminal of JACK tested shall be dipped into soldering flux or equivalent for 5 ~ 10 seconds and then immersed into molten solder Sn at $260 \pm 5^{\circ}\text{C}$ for 3 ± 0.5 seconds , the coverage should more than 95% . 插座端子部 , 浸助焊劑 5 ~ 10 秒 , 再浸 Sn 溶液—溫度 $260 \pm 5^{\circ}\text{C}$. 時間 3 ± 0.5 秒 , 端子部上錫覆蓋面積須達 95% 以上 .
(E3)Soldering heat 上錫耐熱性	The terminal for a printed circuit board . Temperature of solder : $260 \pm 5^{\circ}\text{C}$ Dip time : 5 ± 1 seconds . 端子部與銅箔面上錫溫度與時間 . 溫度 : $260 \pm 5^{\circ}\text{C}$ 時間 : 5 ± 1 秒 .

凱譽科技股份有限公司

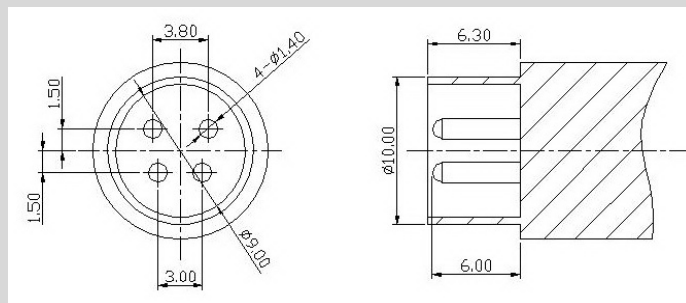
KAI YUI TECHNOLOGIC CORP.

(E4) Hand Soldering Temperature 手焊溫度	Temperature of solder : $350 \pm 10^{\circ}\text{C}$ Dip time : 3 ± 0.5 seconds . 溫度 : $350 \pm 10^{\circ}\text{C}$ 時間 : 3 ± 0.5 秒 .
--	---

F) . DIP 溫度曲線圖

ITEM 項目	TEST CONDITIONS 測試條件
The temperature peak without lead. 無鉛波峰焊制程溫度	 <p>Pre-heating temperature is $25 \sim 120^{\circ}\text{C}$, for a duration about 80 seconds. 預熱溫度$25 \sim 120^{\circ}\text{C}$, 時間80sec The peak temperature is 260°C, the duration for 10 seconds. 錫爐峰值溫度為 260°C, 持續時間為 10sec.</p>

G) . MATED PLUG 適用插棒



制定日期	A	C	M	
2008. 10. 13	P	H	A	
	V	K	K	
	D	D	E	Roy